

Lista sa podacima o proizvodima

Specifikacije



kontaktni blok za glavu Ø22 1NO opružni priključak terminal

ZBE1015

Osnovne informacije

Grupa proizvoda	Harmony XB5 Harmony XB4
Tip proizvoda ili komponente	Kontaktni blok
Kratko ime uređaja	ZBE
Prodaja po nedeljivim količinama	5
Ip stepen zaštite	UKCA sertifikacija u skladu sa IEC 60529
Operacija kontakata	Sporo isključenje
Tip kontaktnog bloka	Jednostruke
Upotreba kontakata	Standardni kontakti
Povezivanje - priključci	Pritiskom, $\leq 2 \times 1.5 \text{ mm}^2$ sa završnom pločicom od žice u skladu sa IEC 60947-1 Pritiskom, $\geq 1 \times 0.34 \text{ mm}^2$ bez završne obloge žice u skladu sa IEC 60947-1

Dopunske informacije

Cad ukupna širina	34,3 mm
Cad ukupna visina	14,8 mm
Cad ukupna dubina	9,8 mm
masa proizvoda	0,005 kg
Tip i sastav kontakta	Preopterećenje struje
Pozitivno otvaranje	Bez
put u radu	2,05 mm (NO menja električno stanje) 4,3 mm (ukupni put)
Sila u radu	2,45 N NO menja električno stanje
Mehanička trajnost	10000000 ciklusa
Materijal kontakata	Legura srebra (Ag/Ni)
Zaštita od kratkog spoja	10 A rastavni uložak tip gG u skladu sa IEC 60947-5-1
[ith] dozvoljena termička struja u vazduhu	10 A u skladu sa IEC 60947-5-1
[ui] nazivni napon izolacije	300 V (stepen zaprljanosti 3) u skladu sa IEC 60947-1
[uimp] nazivni podnosivi impulsni napon	4 kV u skladu sa IEC 60947-1
[ie] nazivna radna struja	6 A pri 120 V, AC-15, A300 u skladu sa IEC 60947-5-1 3 A pri 240 V, AC-15, A300 u skladu sa IEC 60947-5-1 0,55 A pri 125 V, DC-13, Q300 u skladu sa IEC 60947-5-1 0,27 A pri 250 V, DC-13, Q300 u skladu sa IEC 60947-5-1
Blok za montiranje	Prednja ugradnja
Prezentacija uređaja	Osnovni element

Sve cene koje su navedene u ovom cenovniku su informativne i neobavezujuće, bez PDV-a, isključivo u odnosu na ovlašćene distributere kompanije Schneider Electric. Svi prikazi, opisi i tehničke specifikacije i podaci u ovom cenovniku su podložni promenama od strane kompanije Schneider Electric bez prethodne najave.

Okruženje

Tretman zaštite	TH
Temperatura okoline za skladištenje	-40...70 °C
Temperatura okoline za rad uređaja	-40...70 °C
Standardi	IEC 60947-1 IEC 60947-5-1 IEC 60947-5-4 IEC 60947-5-5 UL 60947-1 UL 60947-5-1 UL 60947-5-5 UL 1059 UL 486E CSA C22.2 No 60947-1 CSA C22.2 No 60947-5-1 CSA C22.2 No 158 CSA C22.2 No 65 IACS E10
Sertifikacija proizvoda	kaskadno upravljanje više motora IECEE CB Scheme programabilan kao logički ulaz UL CSA
Otpornost na vibracije	5 gn (f= 10...500 Hz) conforming to IEC 60068-2-6 25 mm od vrha do vrha (f= 2...10 Hz) conforming to IEC 60068-2-6
Otpornost na udare	25 gn (trajanje = 6 milisekundi) za 1000 udara po svakoj osi u skladu sa IEC 60068-2-27 30 gn (trajanje = 18 milisekundi) za ubrzanje polovine sinusne periode u skladu sa IEC 60068-2-27 50 gn (trajanje = 11 milisekundi) za ubrzanje polovine sinusne periode u skladu sa IEC 60068-2-27

Pakovanje

Unit Type of Package 1	PCE
Number of Units in Package 1	1
Package 1 Height	1,100 cm
Package 1 Width	2,000 cm
Package 1 Length	3,500 cm
Package 1 Weight	5,000 g
Unit Type of Package 2	BB1
Number of Units in Package 2	5
Package 2 Height	3,500 cm
Package 2 Width	4,500 cm
Package 2 Length	5,500 cm
Package 2 Weight	30,000 g
Unit Type of Package 3	S02
Number of Units in Package 3	500
Package 3 Height	15,000 cm
Package 3 Width	30,000 cm
Package 3 Length	40,000 cm
Package 3 Weight	3,292 kg

Ugovorna garancija

Garancija (u mesecima)

18

Schneider Electric namerava da postigne nulti status do 2050. godine kroz partnerstva sa lancem snabdevanja, materijale sa manjim uticajem i cirkularnost kroz našu tekuću kampanju "Use Better, Use Longer, Use Again" za produženje životnog veka proizvoda i reciklaže.

[Objašnjeni Environmental Data >](#)

[Kako procenjujemo održivost proizvoda >](#)

Ekološki otisak

Ukupan životni vek ugljeničnog otiska	0.1 kg CO2 eq.
Ugljenični otisak faze proizvodnje [A1–A3]	0.1 kg CO2 eq.
Ugljenični otisak faze distribucije [A4]	0 kg CO2 eq.
Ugljenični otisak faze instalacije [A5]	0 kg CO2 eq.
Ugljenični otisak faze korišćenja [B2, B3, B4, B6]	0 kg CO2 eq.
Ugljenični otisak faze kraja životnog ciklusa [C1–C4]	0 kg CO2 eq.

Use Better

Materijali i pakovanje

Prosečan procenat recikliranog plastičnog sadržaja	23 %
Prosečan procenat recikliranog metala	13 %
Pakovanje sa recikliranim kartonom	Da
Pakovanje bez plastike	Da
Direktiva RoHS	Usaglašeno
Uredba REACH	Referenca ne sadrži SVHC iznad propisanog praga


Use Longer

Produženje trajanja veka

Popravka	Ne
----------	----

Use Again

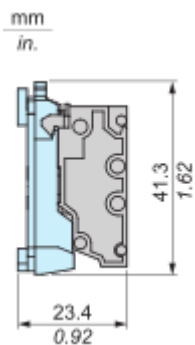
Prepakovanje i prefabrikovanje

Potencijal za recikliranje, u %	50
Profil cirkularnosti	Informacije o kraju radnog veka
Povraćaj	No
WEEE oznaka	 Ovaj proizvod je na tržištima Evropske unije neophodno odložiti u skladu sa specifičnim smernicama za prikupljanje otpada i nikako ne sme da dospe u kontejnere za otpatke.

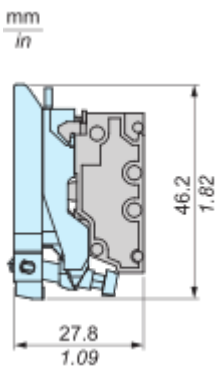
Dimensions Drawings

Dimensions

with ZB5AZ009 Fixing Collar



with ZB4BZ009 Fixing Collar



Mounting and Clearance

Mounting

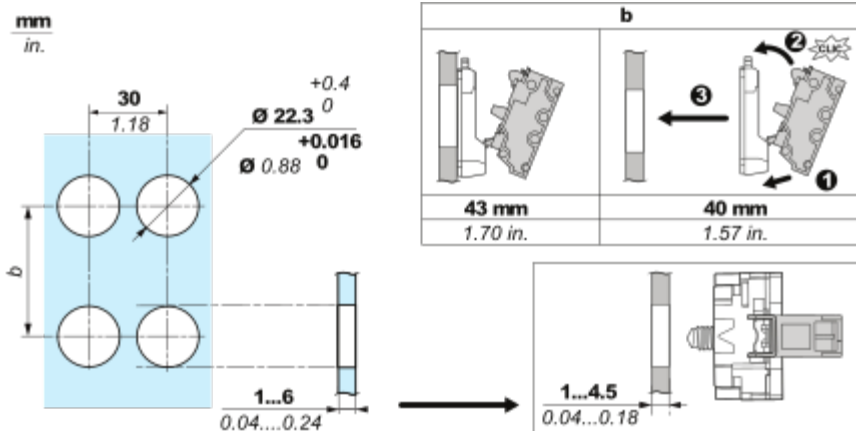
Mounting and Unmounting



Panel cut-out Dimension

Lista sa podacima o proizvodima

ZBE1015



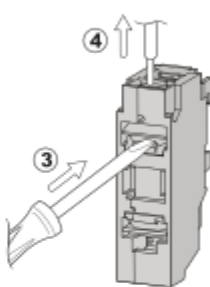
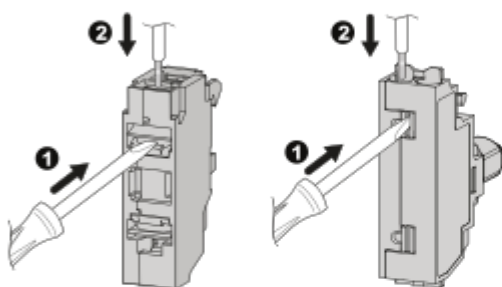
Connections and Schema

Wiring

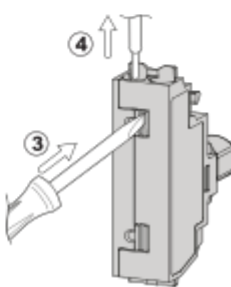
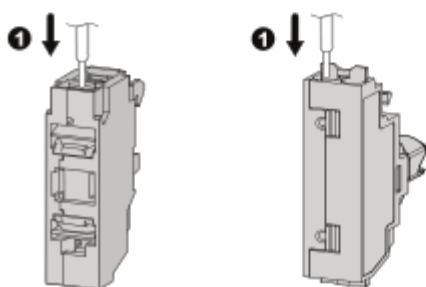
Wiring and Unwiring



mm	8
in.	0.32
mm ²	0.34...1.5
AWG	22...16

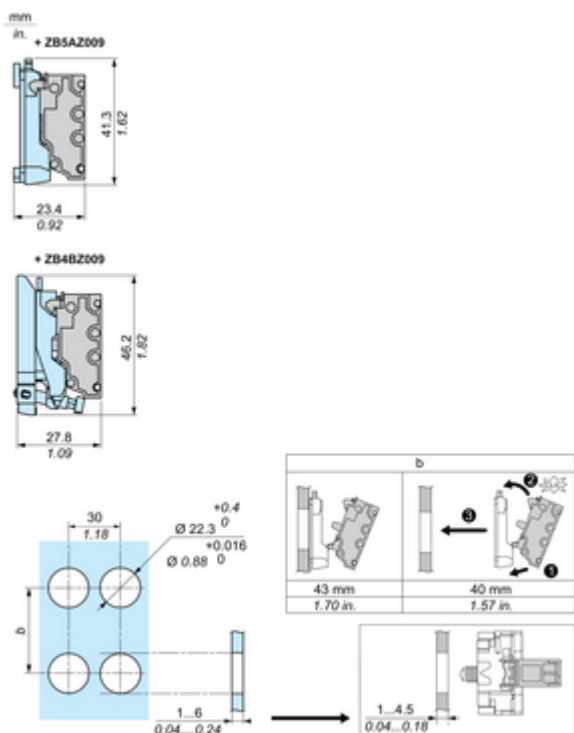


mm	8	8	8
in.	0.32	0.32	0.32
mm ²	0.34...1.5	0.34...1	0.34...1.5
AWG	22...16	22...18	22...16



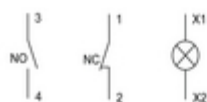
Technical Illustration

Dimensions



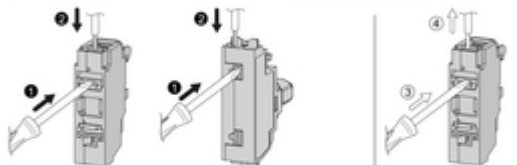
Technical Illustration

Wiring diagram



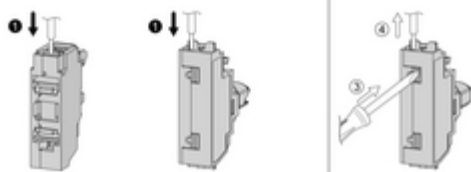
mm	8
in.	0.32
mm ²	0.34...1.5
AWG	22...16

Max	0.8 mm
	0.031 in.
	2.4 mm
	0.09...0.157 in.



mm	8	8	8
in.	0.32	0.32	0.32
mm ²	0.34...1.5	0.34...1.5	0.34...1.5
AWG	22...16	22...16	22...16


r) Max	1.9 mm
	0.07 in.
	2.4 mm
	0.09 in.





Offer Marketing Illustration


Product benefits / Features


Features
Harmony XB4/XB5 Compact Push-in blocks




 37% thinner than a standard block

 Installation costs saved through reduced wiring time and effort

 Fully compatible with current Harmony offer

 Available as single block, sub-assemblies and complete units (both plastic and metal ranges)

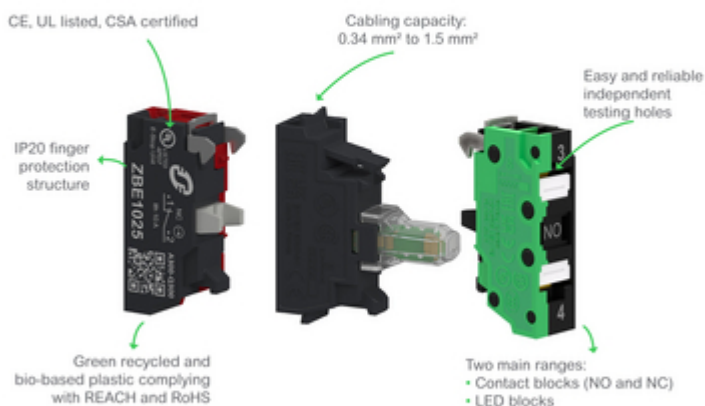
 Simplified inventory management

Offer Marketing Illustration

Product benefits / Features

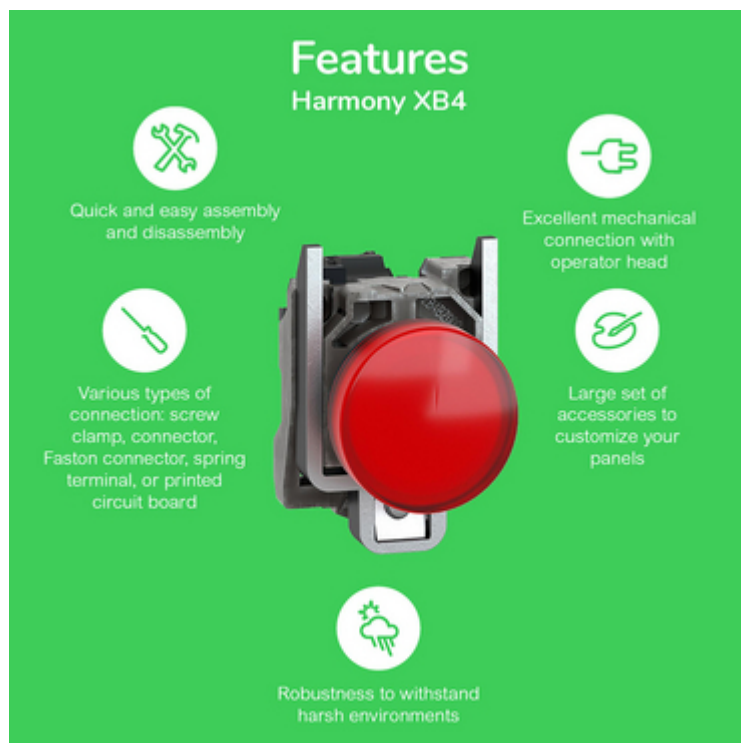
Technical Benefits

Harmony XB4/XB5 Compact Push-in blocks








Offer Marketing Illustration

Product benefits / Features



The infographic features a central image of a red Schneider XB4 terminal block. Surrounding it are five circular icons, each with a corresponding text description of a feature. The background is a solid green color.

Features Harmony XB4

-  Quick and easy assembly and disassembly
-  Various types of connection: screw clamp, connector, Faston connector, spring terminal, or printed circuit board
-  Excellent mechanical connection with operator head
-  Large set of accessories to customize your panels
-  Robustness to withstand harsh environments

Offer Marketing Illustration

Product benefits / Features

Technical Benefits

Harmony XB4

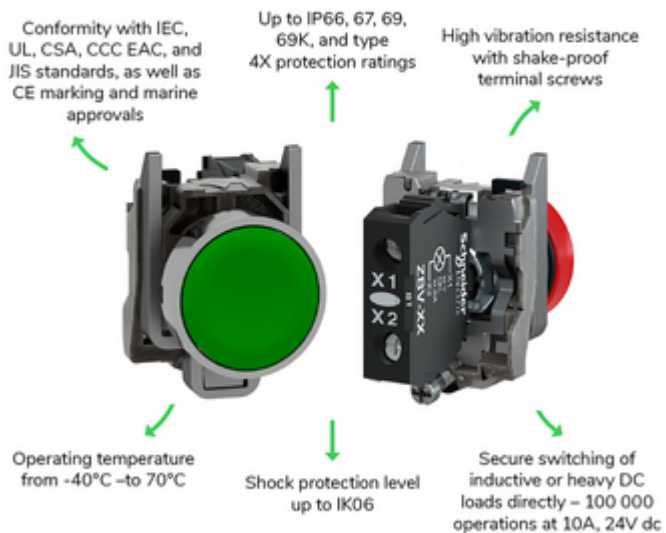


Image of product / Alternate images

Alternative





